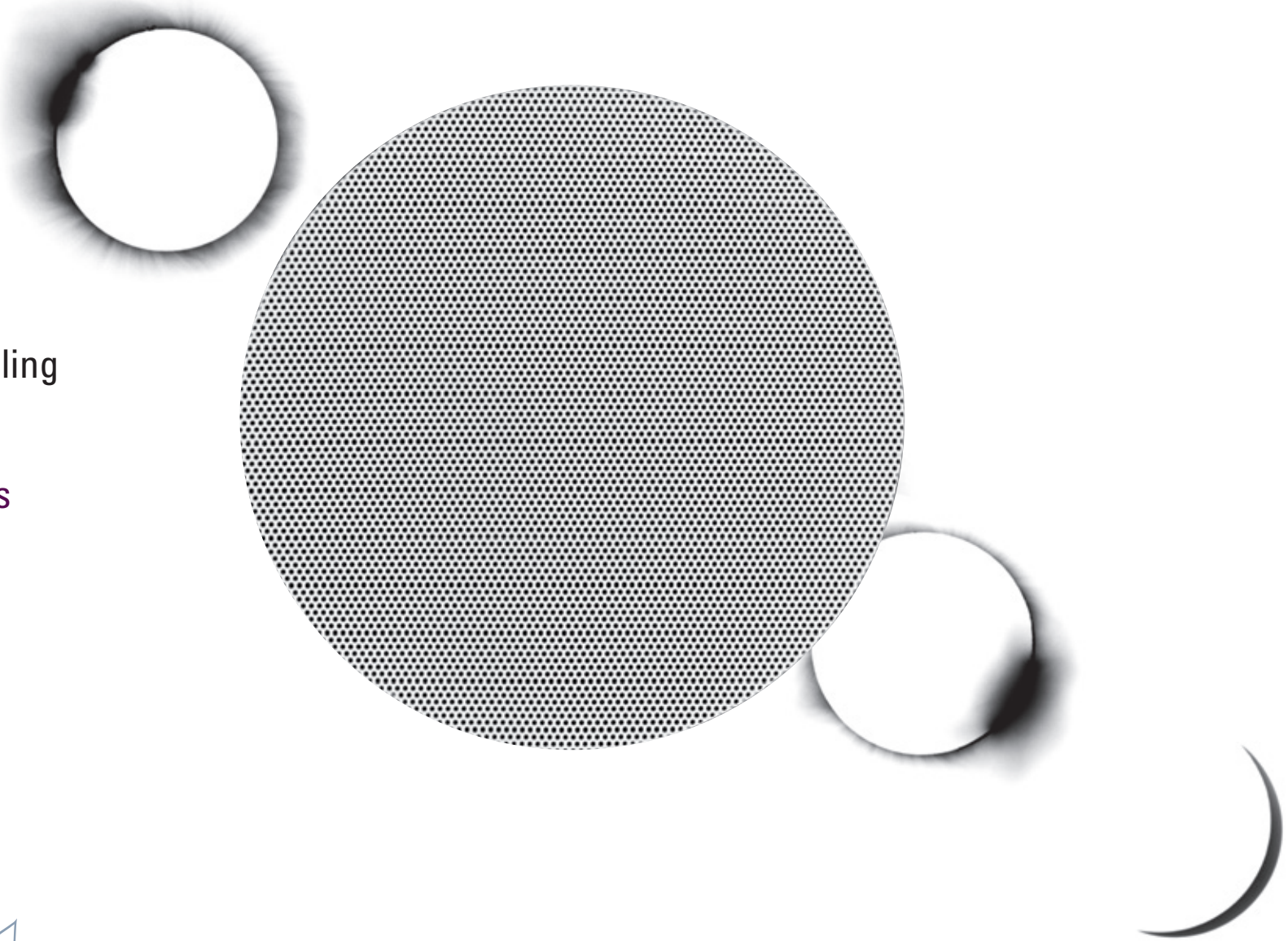




DE-X Serie
Trimless
In-Wall / In-Ceiling
Speakers

Pure Acoustics

pure listening 





DE-X Series PURE ACOUSTICS

Our trimless speakers of the **DE-X Series** are high-end speakers for flush mounting in ceilings and walls.

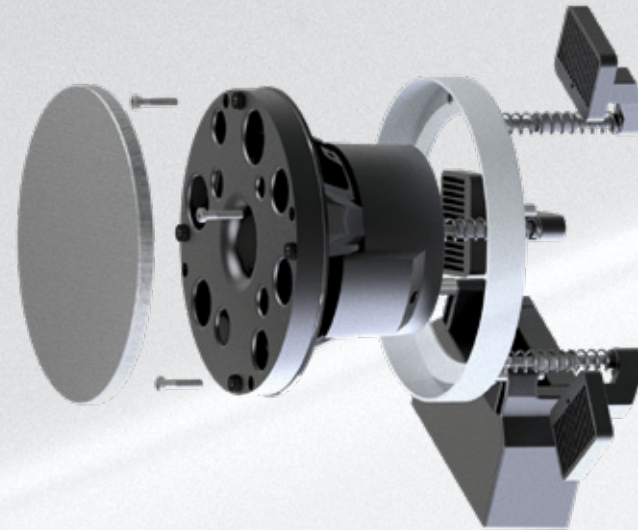
The minimalist appearance and compact dimensions of the round, square, and rectangular models of the DE-X Series allow sound concepts of outstanding audio quality to be implemented with minimum intrusion in indoor spaces that feature a sophisticated interior design.

Depending on requirements and on room/situation, the various speaker models in the DE X Series can be combined to create impressive and visually harmonious sound systems. The models with optimized Polar® technology are designed for exceptionally consistent sound transmission from the in-ceiling sound system, even with just a few speakers. They offer a dispersion angle of 180°. The models in the CD and FR series feature targeted dispersion and are especially suitable as front speakers in AV systems and conference spaces.

- TRIMLESS WITH FLUSH MOUNTING
- MINIMAL DIMENSIONS
- ULTRA-COMPACT STRUCTURE
- MAXIMUM FLEXIBILITY DURING INSTALLATION
- A VARIETY OF DISPERSION CHARACTERISTICS
- OPTIMIZED POLAR® TECHNOLOGY

OPTIMAL
DISPERSION
CHARACTERISTICS

To ensure natural reproduction and perfect acoustic dispersion, we have further optimized our new generation of patented coaxial drivers that feature **Polar® technology**.



OPTIMAL
FLEXIBILITY
DURING
INSTALLATION

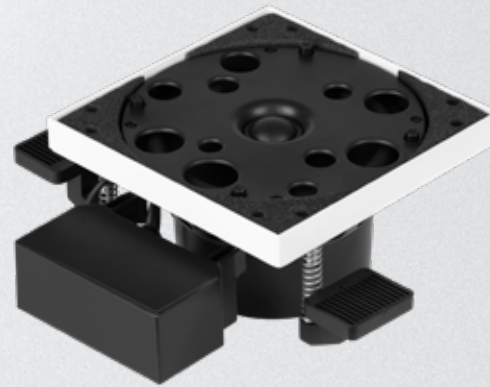
Modular construction
of our **DE** and
DE-X Series



Penthouse Austria
Invisible multi-room
sound system with
trimless speakers
outdoors



ULTRA
COMPACT
STRUCTURE

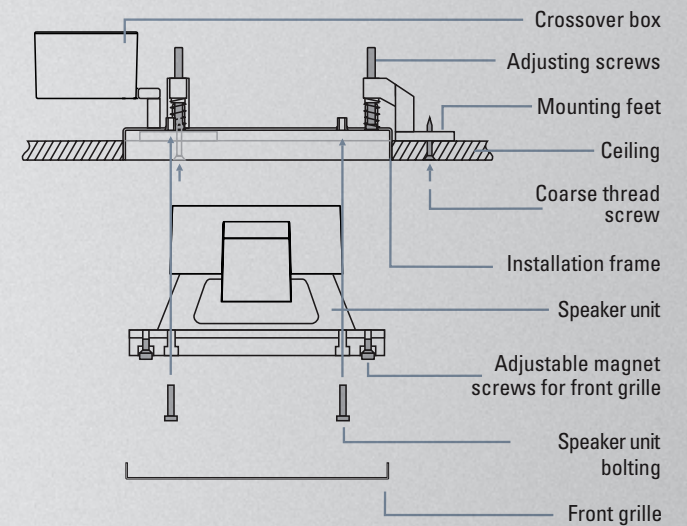


Round models



Square models

The speakers of the **DE-X Series** are flush mounted in walls and ceilings. After installation only the flush mounted front grilles are visible.



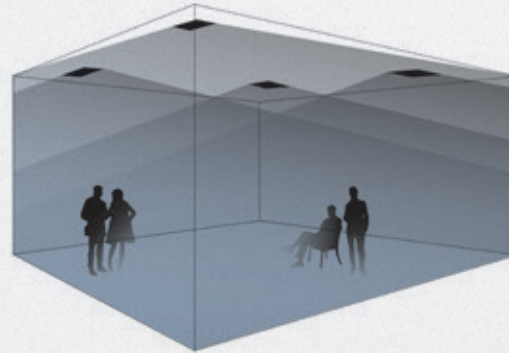


DE-X Series MODELS WITH DIFFERING DISPERSION CHARACTERISTICS

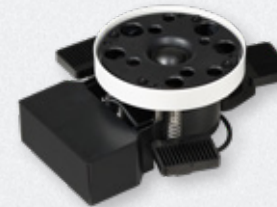
Polar® Speakers

Uncompromising two-way speakers with patented Polar® technology for extremely broad and even sound dispersion (180°).

With Polar speakers it is possible to homogeneously fill rooms with sound employing considerably fewer systems and greater speaker distances.



With a few Polar speakers it is possible to homogeneously fill a room with sound.



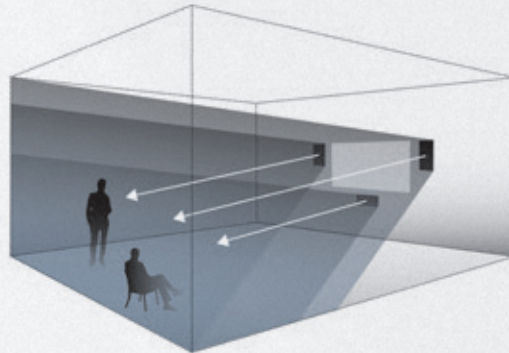
The patented coaxial chassis with Polar® technology offer perfect hemispherical dispersion.



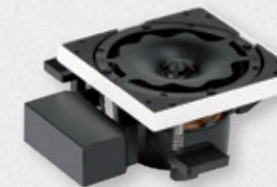
DE-X 300 R Polar with additional subwoofer chassis

CD Speakers

The models DE-X 200 CD and DE-X 300 CDR are high-performance two-way in-wall speakers with a defined dispersion angle of 80°. They are employed as front speakers (L, R, center) for home-audio systems and media rooms. A tweeter with waveguide ensures controlled sound radiation with CD characteristics (Constant Directivity).



CD speaker (L, R, center) built into the wall.



The coaxial 2-way system with de:shape® waveguide creates a defined sound radiation with a constant dispersion angle of 80°.



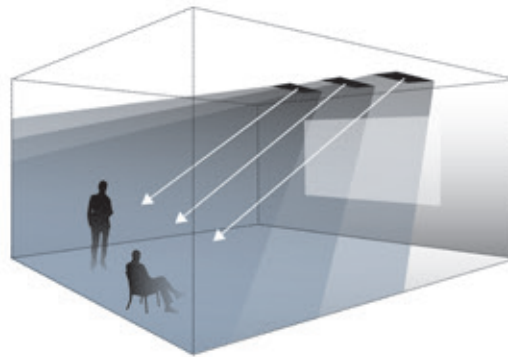


Private mansion Tegernsee,
Surround system with DE-X 300 CDR and DE-X
Center in special format. The subwoofers are
invisibly integrated into the furniture.

DIFFERENT DESIGNS AND DISPERSION CHARACTERISTICS OFFER
MAXIMUM SCOPE WHEN PLANNING SOPHISTICATED SOUND CONCEPTS

FR Speakers

The model DE-X 300 FR is a powerful front speaker for in-ceiling installation which radiates 35° downwards. It was specially developed for employment as front speaker (L, R, center) without impairing the field of view in homecinema applications and media rooms.



DE-X 300 FR front speaker (L, R, center) for home-cinema



Special design which radiates 35° downwards

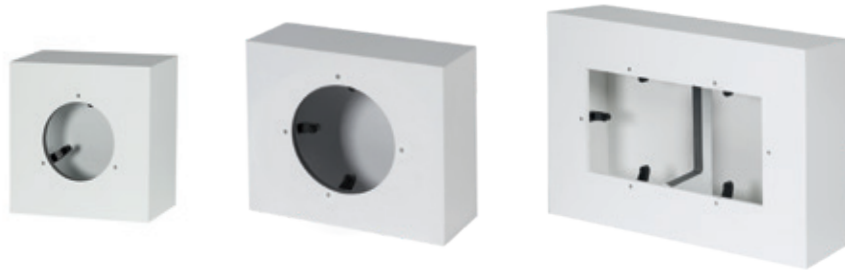


A coaxial 3-way chassis with Waveguide creates the radiation direction, a second bass chassis ensures dynamic bass reproduction.

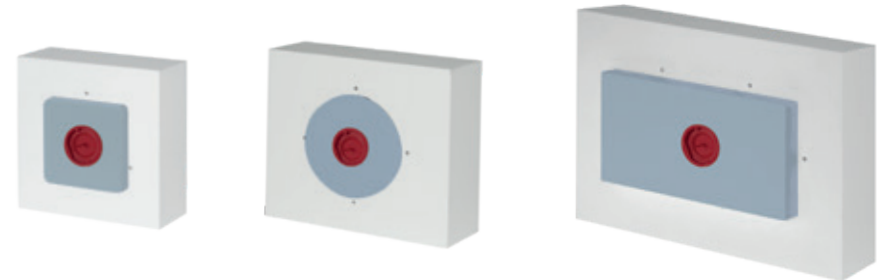


DE-X Series BACK BOXES

We offer suitable back boxes for installation in acoustic ceilings, solid walls or concrete ceilings.
You can find more detailed information in the DE-X installation instructions and the data sheets.



Back boxes for drywall and ceiling (EG Series)



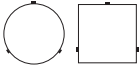
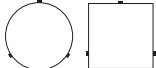









Back boxes for concrete ceilings (EGB Series)



DE-X installation videos with or without back box on Youtube

Special version of DE-X loudspeakers with shadow gap as well as matching sockets for cameras and smoke detectors.

DE-X Series MODELS

Model	Principle	Frequency range	Power capacity	Impedance	100 V Versions	Sensitivity	Dispersion	Dimensions	Cutout size	Installation depth	Weight	Back boxes
 DE-X 140 Polar DE-X 140 Q Polar	2-way hifi speaker with Polar technology	76 ... 21000 Hz	RMS/Prog. 30/60 Watts	8 Ohms	7,5/15/30 Watts (100 V)	84 dB (1W/1m) max. 102 dB 100 V max. 99 dB	180°	d=122 mm 122 x 122 mm (Q)	d=128 mm 128 x 128 mm (Q)	84 mm	1,2 kg	EG 140 / EGB 140 EG 140 Q / EGB 140 Q
 DE-X 170 Polar DE-X 170 Q Polar	2-way hifi speaker with Polar technology	60 ... 21000 Hz	RMS/Prog. 40/80 Watts	8 Ohms	7,5/15/30 Watts (100 V)	86 dB (1W/1m) max. 105 dB 100 V max. 101 dB	180°	d=152 mm 152 x 152 mm (Q)	d=158 mm 158 x 158 mm (Q)	88 mm	1,7 kg	EG 170 / EGB 170 EG 170 Q / EGB 170 Q
 DE-X 200 Polar DE-X 200 Q Polar	2-way hifi speaker with Polar technology	54 ... 21000 Hz	RMS/Prog. 60/120 Watts	8 Ohms	7,5/15/30 Watts (100 V)	87 dB (1W/1m), max. 108 dB, 100 V max. 102 dB	180°	d=170 mm 170 x 170 mm (Q)	d=176 mm 176 x 176 mm (Q)	100 mm	2,1 kg	EG 200 / EGB 200 EG 200 Q / EGB 200 Q
 DE-X 200 HSP DE-X 200 HSPQ Polar	2-way hifi speaker with Polar technology	96 ... 21000 Hz	RMS/Prog. 60/120 Watts	8 Ohms	7,5/15/30 Watts (100 V)	93 dB (1W/1m), max. 114 dB, 100 V max. 109 dB	180°	d=170 mm 170 x 170 mm (Q)	d=176 mm 176 x 176 mm (Q)	102 mm	2,3 kg	EG 200 / EGB 200 EG 200 Q / EGB 200 Q
 DE-X 300 R Polar	3-way hifi speaker with Polar technology	52 ... 21000 Hz	RMS/Prog. 120/240 Watts	4 Ohms	on request	89 dB (1W/1m) max. 112 dB	180°	336 x 170 mm	342 x 176 mm	100 mm	3,8 kg	EG 300 / EGB 300
 DE-X 200 LP DE-X 200 LPQ	2-way hifi speaker with reduced mounting depth	75 ... 21000 Hz	RMS/Prog. 40/80 Watts	8 Ohms	7,5/15/30 Watts (100 V)	85 dB (1W/1m) max. 104 dB 100 V max. 100 dB	140°	d=170 mm 170 x 170 mm (Q)	d=176 mm 176 x 176 mm (Q)	50 mm	1,2 kg	EG 200 / EGB 200 EG 200 Q / EGB 200 Q
 DE-X 200 CD DE-X 200 CDQ	2-way hifi in-wall speaker	54 ... 21000 Hz	RMS/Prog. 60/120 Watts	8 Ohms	on request	88 dB (1W/1m) max. 109 dB	80°	d=170 mm 170 x 170 mm (Q)	d=176 mm 176 x 176 mm (Q)	100 mm	2,1 kg	EG 200 / EGB 200 EG 200 Q / EGB 200 Q
 DE-X 300 CDR	3-way hifi in-wall speaker	52 ... 21000 Hz	RMS/Prog. 120/240 Watts	4 Ohms	on request	89 dB (1W/1m) max. 112 dB	80°	336 x 170 mm	342 x 176 mm	150 mm	3,8 kg	EG 300 / EGB 300
 DE-X 300 FR	3-way in ceiling speaker with Polar technology	57 ... 21000 Hz	RMS/Prog. 80/160 Watts	4 Ohms	on request	87 dB (1W/1m) max. 109 dB	80°, Beam direction -35° downwards	336 x 170 mm	342 x 176 mm	150 mm	4,2 kg	EG 300 FR / EGB 300 FR
 DE-X 200 ST Polar DE-X 200 STQ Polar	Stereo 2-way in-ceiling speaker with Polar technology	54 ... 21000 Hz	RMS/Prog. 2 x 40/80 Watts	2 x 8 Ohms	on request	86 dB (1W/1m) max. 108 dB	180°	d=170 mm 170 x 170 mm (Q)	d=176 mm 176 x 176 mm (Q)	100 mm	2,1 kg	EG 200 / EGB 200 EG 200 Q / EGB 200 Q
 DE-X 300 SUB	Subwoofer	40 ... 250 Hz	RMS/Prog. 120/240 Watts	4 Ohms	on request	83 dB (1W/1m) max. 107 dB	180°	336 x 170 mm	342 x 176 mm	100 mm	3,8 kg	EG 300 / EGB 300

LB Lautsprecher und
Beschallungstechnik GmbH

info@lb-lautsprecher.de
www.lb-lautsprecher.de
www-feiner-hoeren.de
@LB_Audio_Components

Tel +49 89 1893109-0 · Fax -29

Kapellenstr. 10
85622 Feldkirchen by Munich

SPECIAL VERSIONS

Over many years of application-related development work, we have developed a large number of project-related DE-X special types.

Just ask – we will be happy to advise you.

Changes and errors excepted.
© LB Lautsprecher und Beschallungstechnik GmbH

pure listening 