



## SB-A 2.0 DSC CAM+ / SB-A 2.0 DSC CAM+ DANTE

### Active Stereo Soundbar with Integrated Camera and Microphone-Array

display<sup>CAM</sup> series

#### Description

The active stereo soundbars SB-A 2.0 CAM+ provide an integrated camera (Huddly IQ) + microphone array and are specially designed to deliver outstanding picture and sound quality in small conference spaces and huddle rooms.

The SB-A 2.0 CAM+ soundbar go into action in larger spaces where individual table microphones are used, as there is no microphone integrated (Huddly GO). A flush-mounted waveguide is integrated in the soundbar cabinet to ensure optimum speech intelligibility and microphone array directivity during voice transmission.

The active soundbars offer outstanding amplifier power (2 × 50 watts) and are equipped with a digital signal processor and multiband limiters for perfect sound reproduction.

#### Customized Versions On Measure

Alongside the standard 960-mm-wide SB-A 2.0 CAM model, we also offer customized versions with widths ranging from 960 mm to 2,000 mm – ensuring you get the perfect fit for your display to create an elegant, harmonized display and speaker unit.

#### Assembly

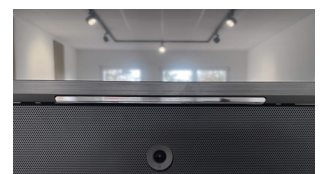
Use our SB-VESA brackets for direct mounting on displays. These can be used on displays measuring from approx. 40 to 100 inches. Alternatively, you can use our WH 80 brackets to attach the speakers directly to the wall or to a wall panel for flush mounting (brackets must be ordered separately).

#### Key Features

- Active stereo soundbar with integrated camera + microphone array
- Very linear frequency range
- Optimized speech intelligibility
- Control via LB CONTROL App and Network commands
- Analog and digital Inputs
- Optional: DANTE Interface
- Power 2 × 50 watts
- Automatic switch-on
- Switchable Ground-Lift
- Customized versions on measure for display widths from 960 up to 2000 mm
- VESA mounts for display heights up to 100 inches

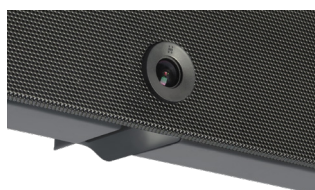
#### Fields of Application

- Conference rooms
- Video conferences
- Huddle rooms

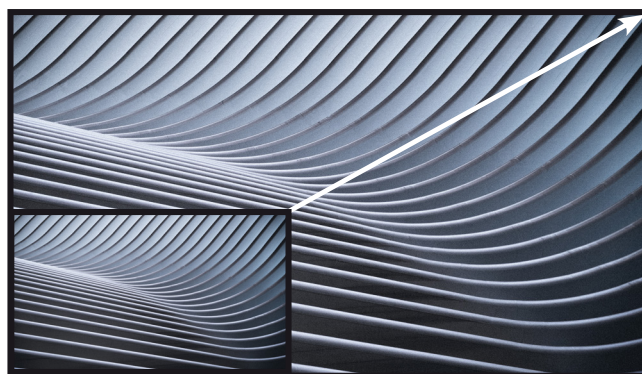


# SB-A 2.0 DSC CAM+ / SB-A 2.0 DSC CAM+ DANTE

## Active Stereo Soundbar with Integrated Camera and Microphone-Array



The cabinet of the soundbar has an integrated flush-mounted waveguide for optimal speech intelligibility during voice transmission.



Individual width on measure from 960 mm up to 2000 mm.

### Technical Data

Principle	Active stereo soundbar with integrated camera or camera + microphone-array
Components	2 × 2.5" full-range drivers + 2 × 2.5" woofers + 3 × 2.5" passive radiators (as of 1200 mm 4 × 2,5" passive radiators)
Frequency range	55 Hz – 20 kHz
Power capacity	2 × 50 watts
Maximum SPL	max. 109 dB (1 W/1m)
Nominal dispersion	120°
Connectors	Camera: USB 3 incl. 2 m cable Line In Stereo, symm. and RCA, optical SPDIF input (Toslink), Ethernet socket RJ45, external power supply, input cable mini jack 3.5 mm to RCA, 1.5 m.
⚡ Dante	Model SB-A 2.0 DSC CAM+ DANTE also has an Ethernet socket for DANTE
Input sensitivity	-6 dBu for full modulation, input-impedance 4.7 kohms
Operating controls at back	Volume control, LED On/Limit, Ground-Lift-Switch
Automatic switch-on	Switch-off with approx. 5 min. delay
Power supply	Extern power supply 24 V DC
Mains connection	90 – 240 V AC
Dimensions (W × H × D)	960 × 80 × 48 mm, depth of camera (middle of cabinet) 70 mm
Weight	5 kg
Cabinet	Aluminium, front precisions steel grille, powder-coated
Suspension points	Threaded inserts 4 × M 6 at rear
Warranty	5 years

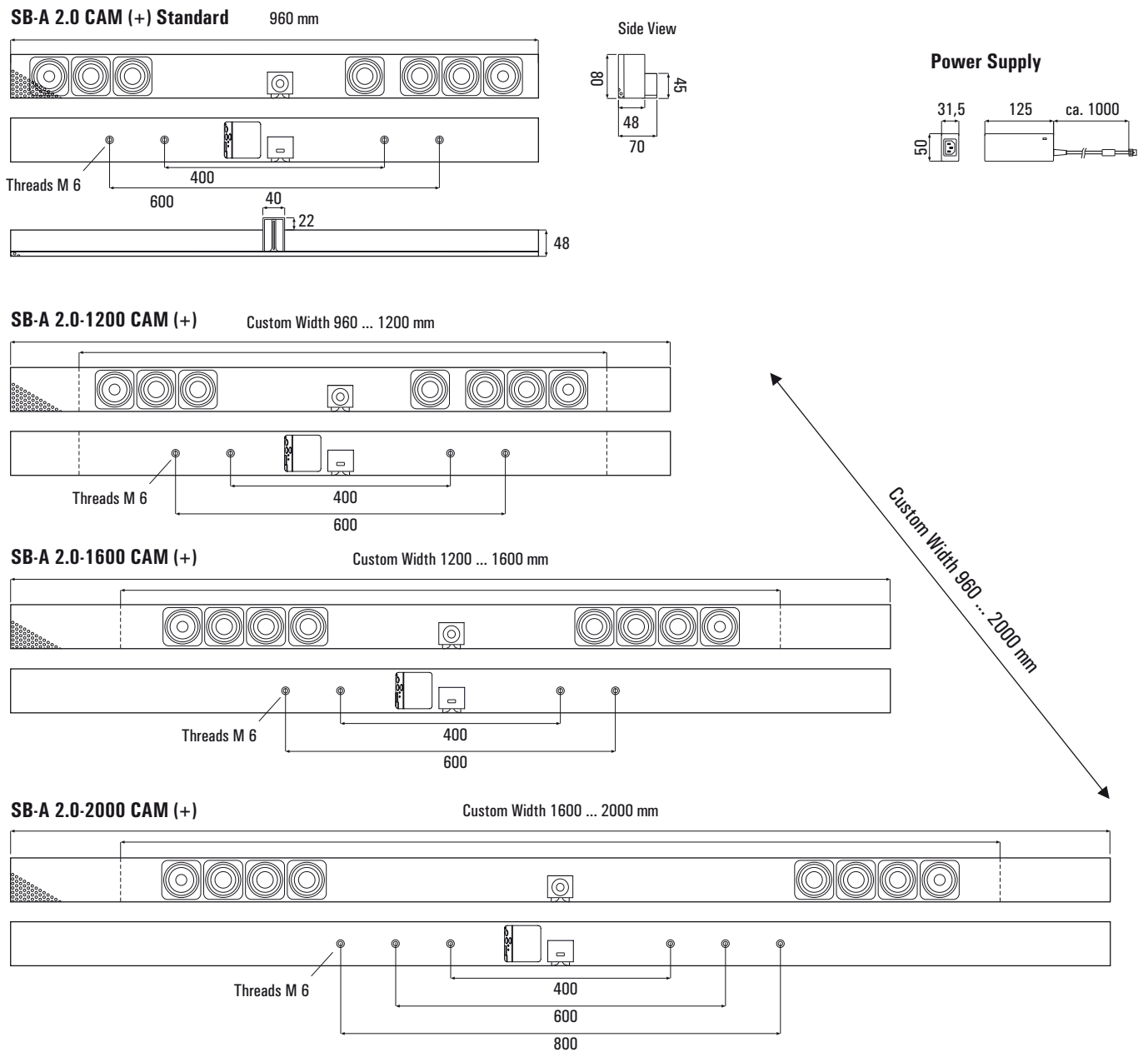
Model	Order-No.	Version
<b>SB-A 2.0 DSC CAM+</b>	1215-0013	Standard version with integrated camera + microphone array (Huddly IQ), width 960 mm, black
<b>SB-A 2.0 DSC CAM+ DANTE</b>	1215-0017	with DANTE
<b>Customized versions with width on measure</b>		
<b>SB-A 2.0 DSC CAM+ -1200</b>	1215-0014	Width on measure from 960 up to 1200 mm
<b>SB-A 2.0 DSC CAM+ -1200 DANTE</b>	1215-0018	with DANTE
<b>SB-A 2.0 DSC CAM+ -1600</b>	1215-0015	Width on measure from 1200 up to 1600 mm
<b>SB-A 2.0 DSC CAM+ -1600 DANTE</b>	1215-0019	with DANTE
<b>SB-A 2.0 DSC CAM+ -2000</b>	1215-0016	Width on measure from 1600 up to 2000 mm
<b>SB-A 2.0 DSC CAM+ -2000 DANTE</b>	1215-0020	with DANTE
<b>Pauschale SB</b>	1213-0006	Customized version fee SB (one-time charge per display type and order)

Accessories	Order-No.	Version
<b>Wall-mounts for wall assembly</b>		
<b>SB-VESA</b>	7111-0012	VESA mount for displays from 40" – 100"
<b>Wall-mounts for wall assembly</b>		
<b>WH 80</b>	7111-0013	Adjustable to a distance of 35 to 110 mm from the wall, pair

# SB-A 2.0 DSC CAM+ / SB-A 2.0 DSC CAM+ DANTE

## Active Stereo Soundbar with Integrated Camera and Microphone-Array

### Dimensions SB-A 2.0 CAM +



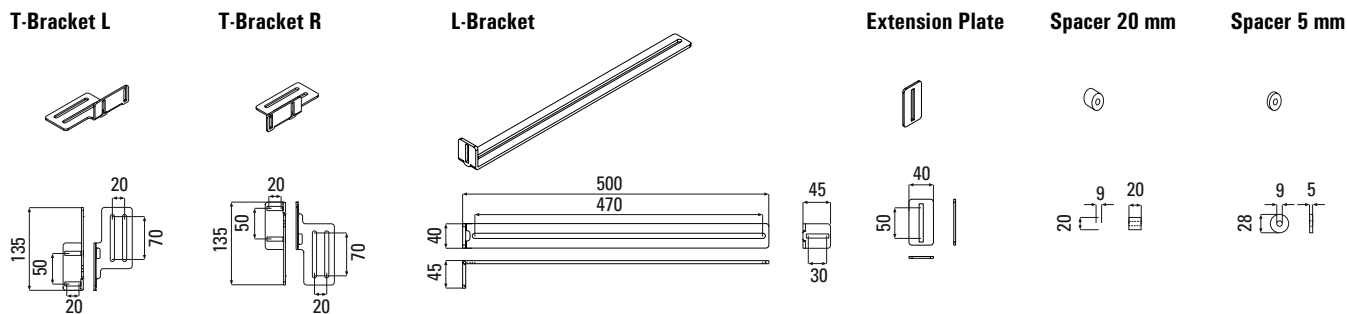
# SB-A 2.0 DSC CAM+ / SB-A 2.0 DSC CAM+ DANTE

## Active Stereo Soundbar with Integrated Camera and Microphone-Array

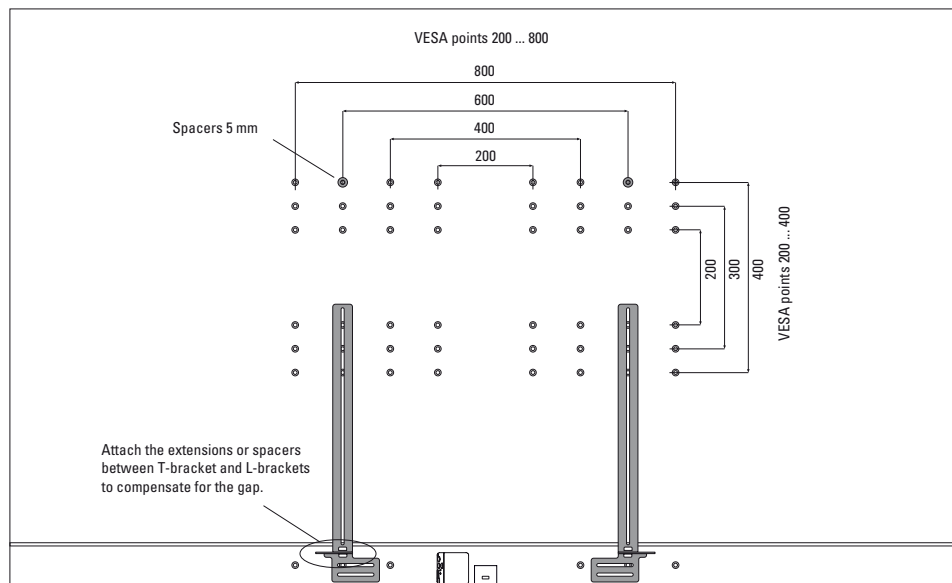
### Dimensions VESA Mount

#### SB-VESA Mount

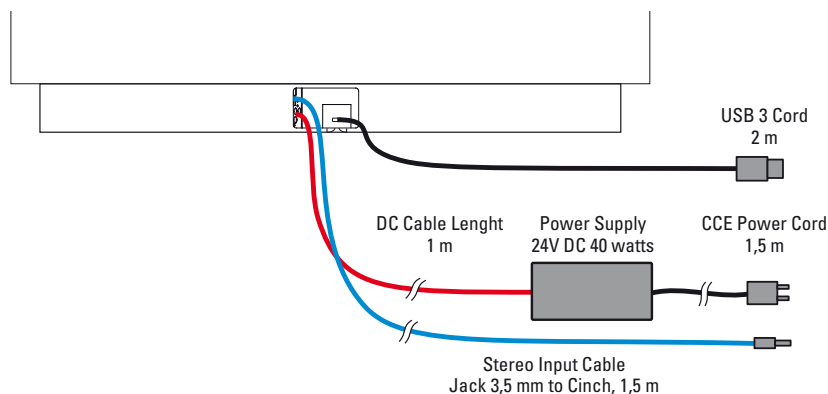
(comprises 1 x T-Bracket L, 1 x T-Bracket R, 2 x L-Bracket, 2 x Extension Plate, 2 x Spacer 20 mm, 2 x Spacer 5 mm + Screws)



Mounting a customized soundbar SB(-A) 2.0 CAM-2000 with SB-VESA on a 85" display



### Speaker Connection



## SB-A 2.0 DSC CAM+ / SB-A 2.0 DSC CAM+ DANTE

### Active Stereo Soundbar with Integrated Camera and Microphone-Array

#### LB CONTROL App

Audio Control Demo DL-A 2.2 DSC Name: Preset \* Status: Sleep

Line In sym.  Active

SPDIF Optical Input  Active

DANTE Input  Active

IN 1 2

Left Right

+24  
+12  
0  
-12  
-24  
-36  
-48  
-60  
-72

DSP

DSP L

DSP R

Status

dB 0 0

Mute

Link

**LB CONTROL APP**  
Browser based Software  
Interface: Ethernet  
Windows + Mac OS  
Download:  
[www.lb-lautsprecher.de](http://www.lb-lautsprecher.de)

The SB-A 2.0 DSC CAM+ is configured with our browser-based **LB CONTROL App**.  
Network settings, lock functions, presets and audio settings (parametric EQs, delays, Compressor and Limiter).  
(Download on our website)

The SB-A 2.0 DSC CAM+ can be controlled and monitored via network commands. You can find the list of network commands in the operating instructions for our LB CONTROL App.



**LB CONTROL App**  
Download Software